

The background features a series of concentric circles in light gray, some solid and some dashed, creating a ripple effect. A large green speech bubble is centered on the page, containing the title text. The bubble has a solid green rectangular body and a green triangular tail pointing downwards.

# US Children's Service System Lessons for the UK

The background of the slide features a series of thin, curved lines in shades of gray, creating a sense of motion and depth. These lines are more prominent on the left side and fade towards the right.

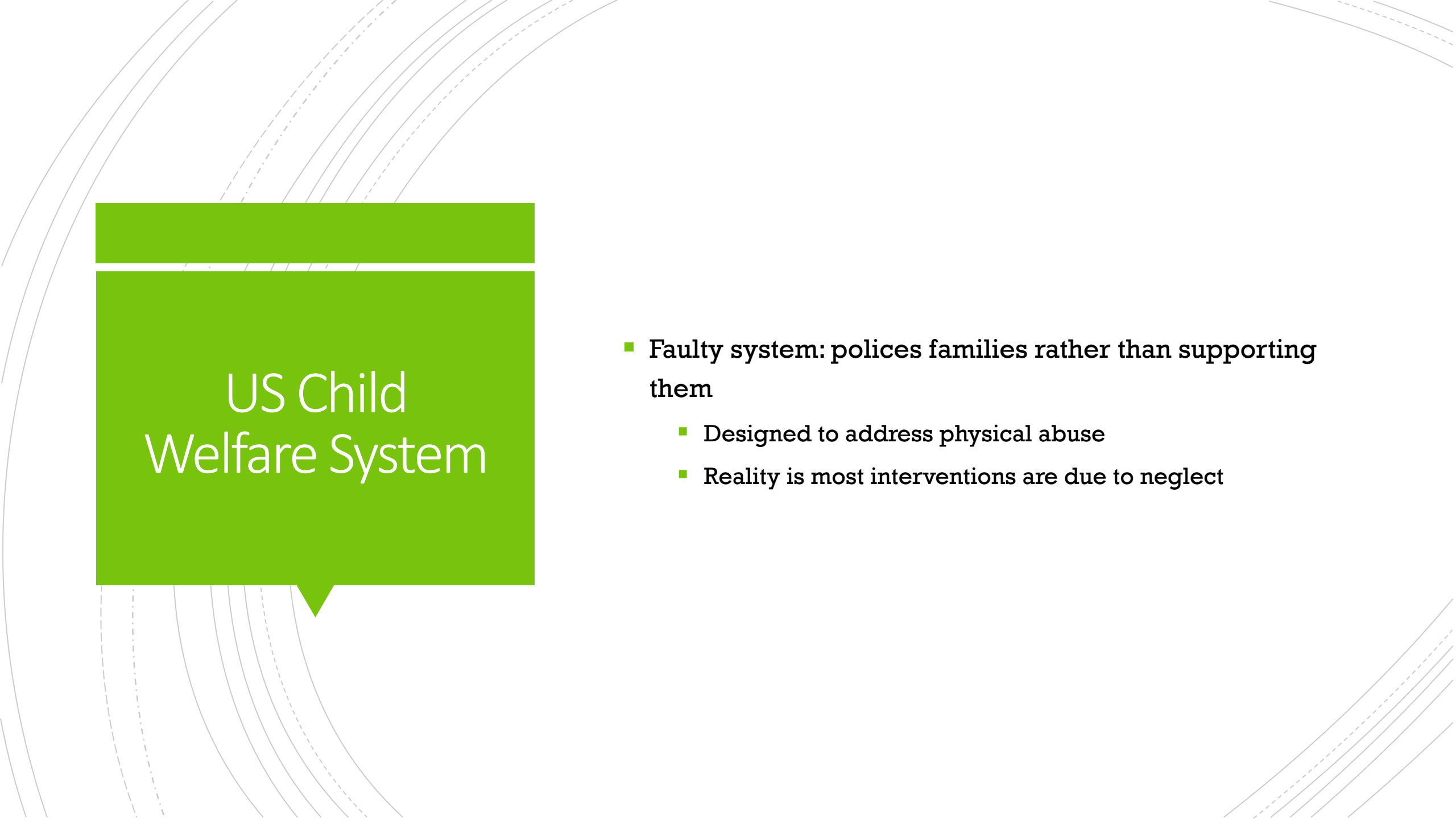
# Agenda

- A bit about me
- There is no US children's and families services system
- A few high level themes about what is driving things here in the US
- Discussion about applicability (or not) in the UK

A green speech bubble graphic with a tail pointing towards the bottom left. The text "US 'System'" is written in white inside the bubble.

# US "System"

- **About 1000 Different Geographies –**
  - Large in size
  - Significant variability
  - Each with 8-10 systems (Income support, health, mental health, education, early care and education, child welfare, juvenile justice, criminal justice, developmental disabilities)
    - Specialization
    - Siloed

The background of the slide features a series of thin, curved lines in shades of gray, some solid and some dashed, creating a sense of motion and depth. A large, solid green rectangular box is positioned on the left side, containing the title text.

# US Child Welfare System

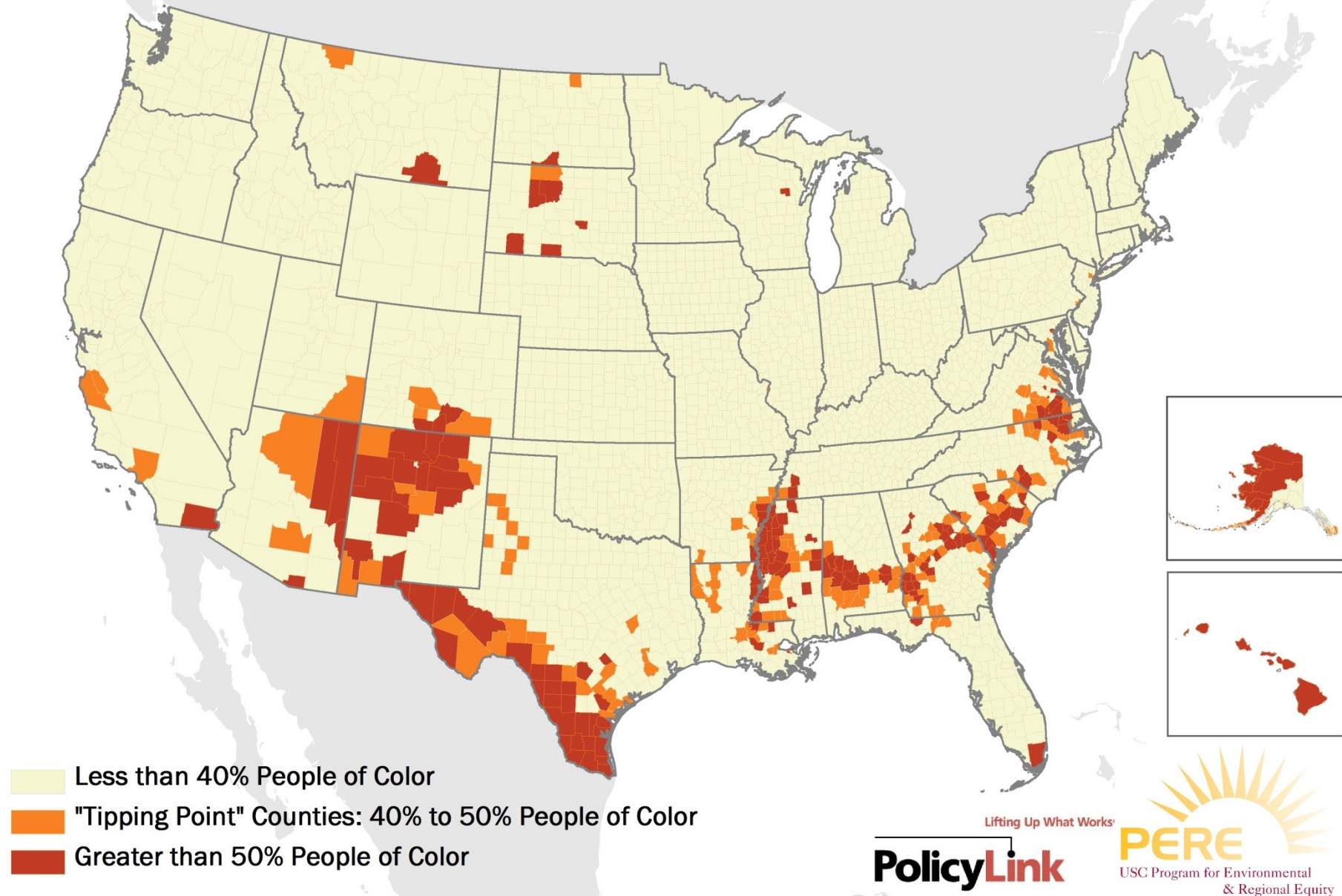
- **Faulty system: polices families rather than supporting them**
  - Designed to address physical abuse
  - Reality is most interventions are due to neglect

## Wisconsin Statute 948.21

- **(2) NEGLECT.** Any person who is responsible for a child's welfare who, through his or her action or failure to take action, for reasons other than poverty, negligently fails to provide any of the following, so as to seriously endanger the physical, mental, or emotional health of the child, is guilty of neglect and may be penalized as provided in sub. (3):**(a)** Necessary care.**(b)** Necessary food.**(c)** Necessary clothing.**(d)** Necessary medical care.**(e)** Necessary shelter.**(f)** Education in compliance with s. 118.15.**(g)** The protection from exposure to the distribution or manufacture of controlled substances, as defined in s. 961.01(4), or controlled substance analogs, as defined in s. 961.01(4m), or to drug abuse, as defined in s. 46.973(1) (b).

# 1980 Percent People of Color by County

6

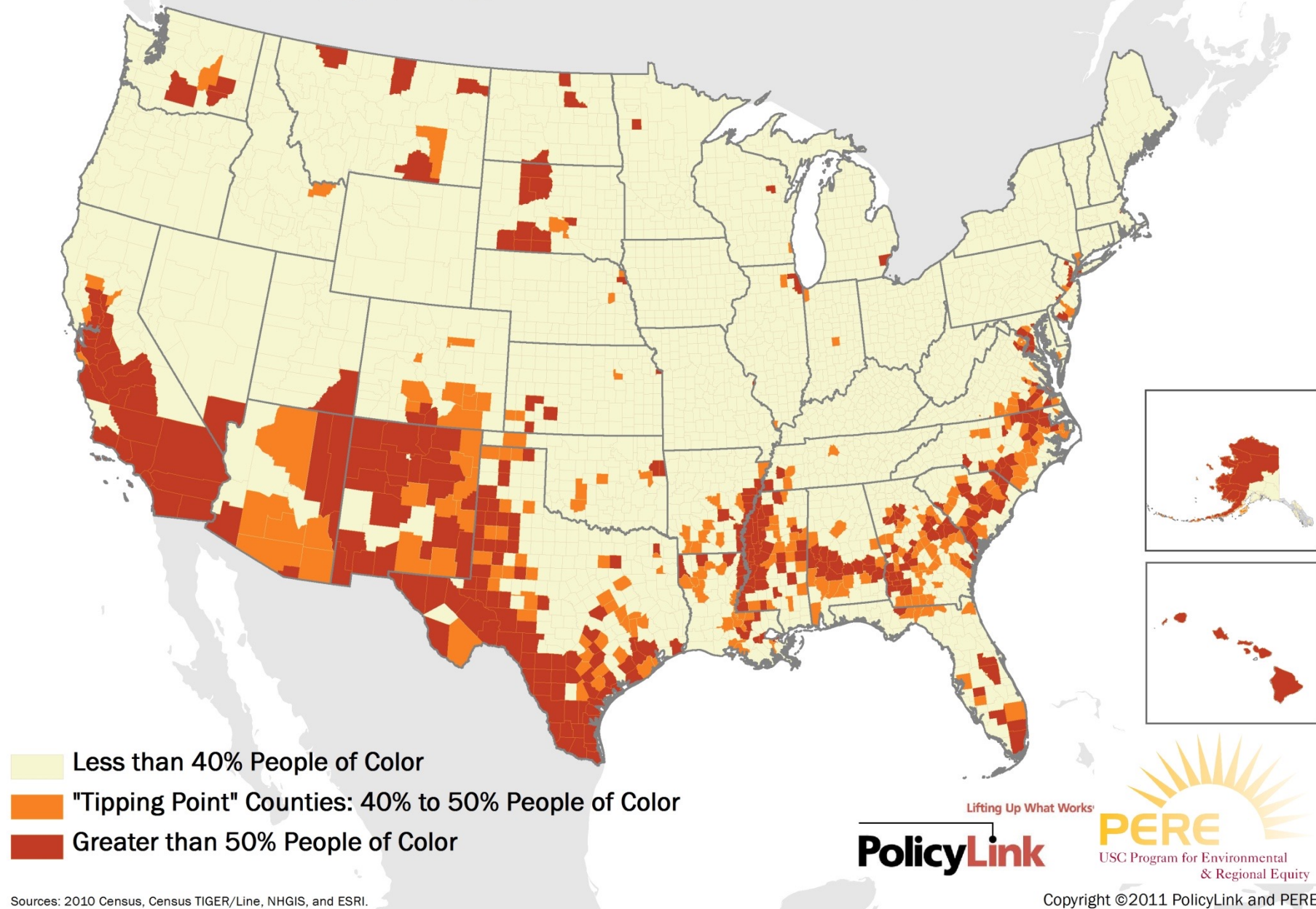


Sources: 1980 Census, Census TIGER/Line, NHGIS, and ESRI.



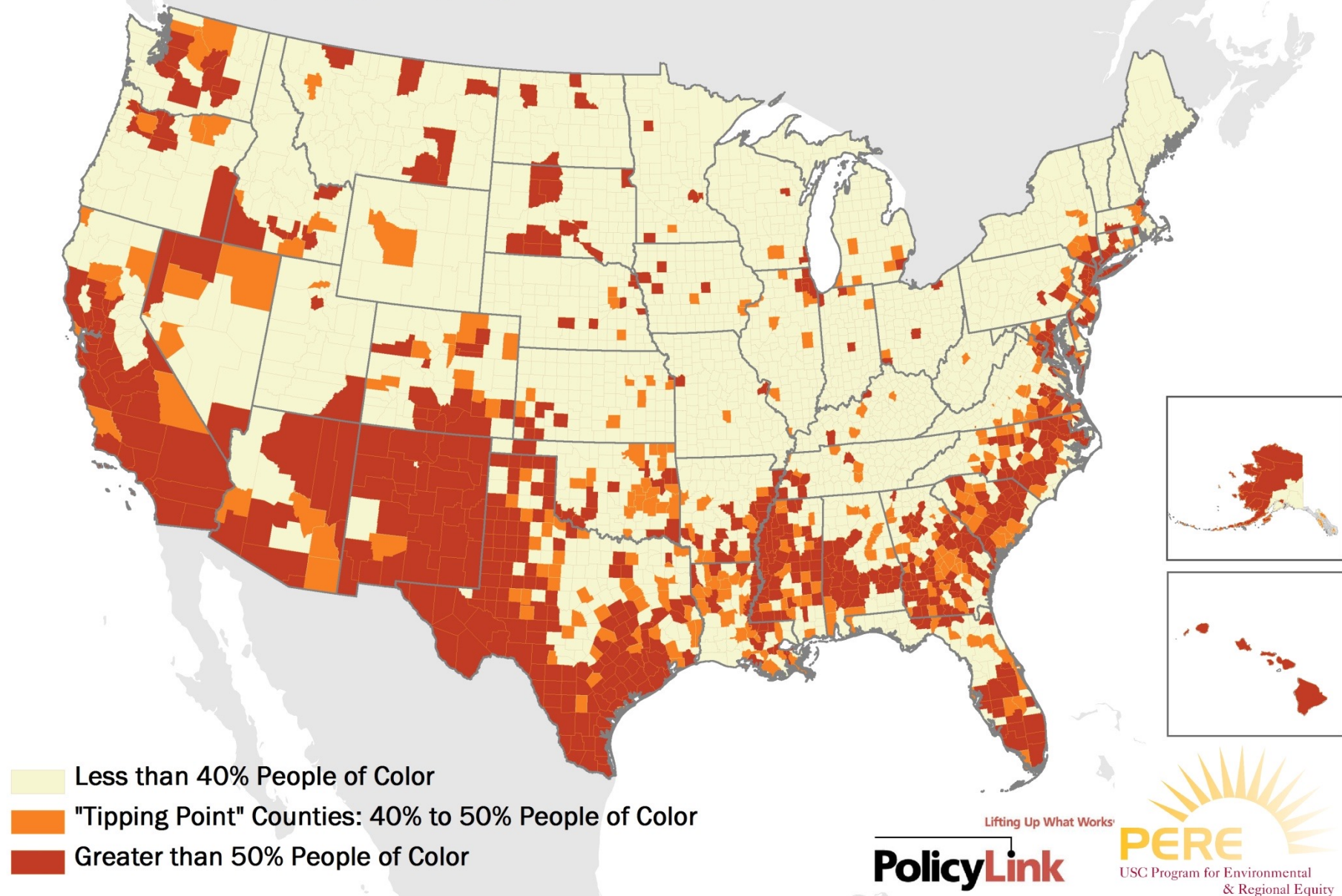
# 2010 Percent People of Color by County

7



# 2040 Percent People of Color by County

8



Sources: Woods & Poole Economics projections data (adjusted using the 2010 Census), Census TIGER/Line, NHGIS, and ESRI.

Copyright ©2011 PolicyLink and PERE



# Child Poverty in WI vs US

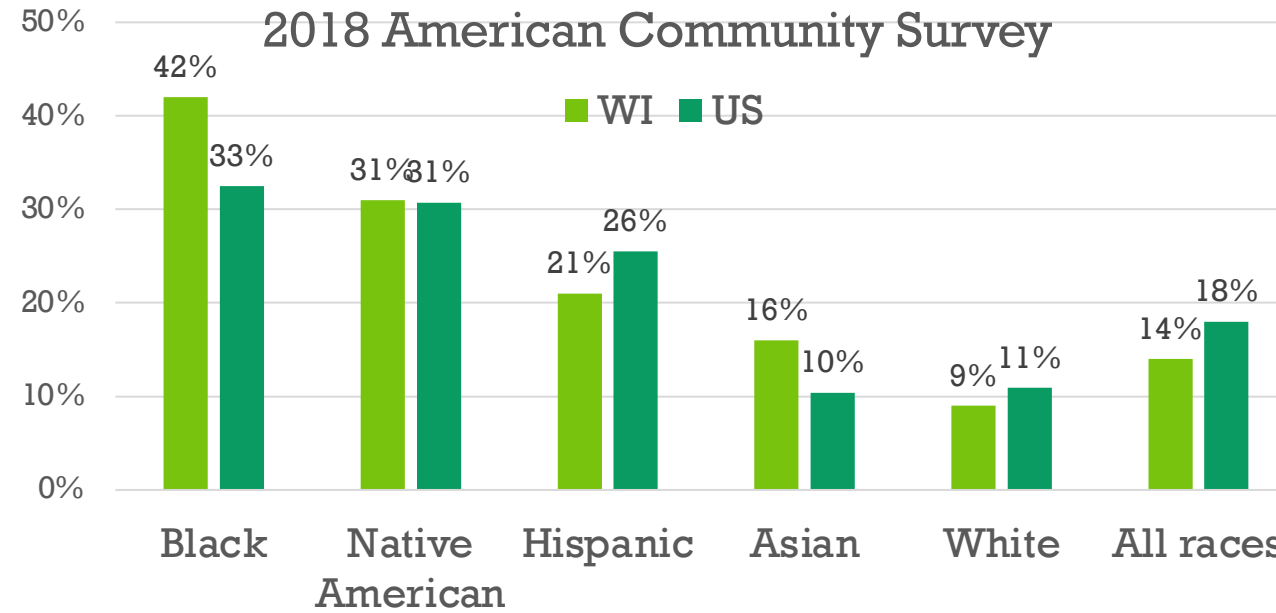
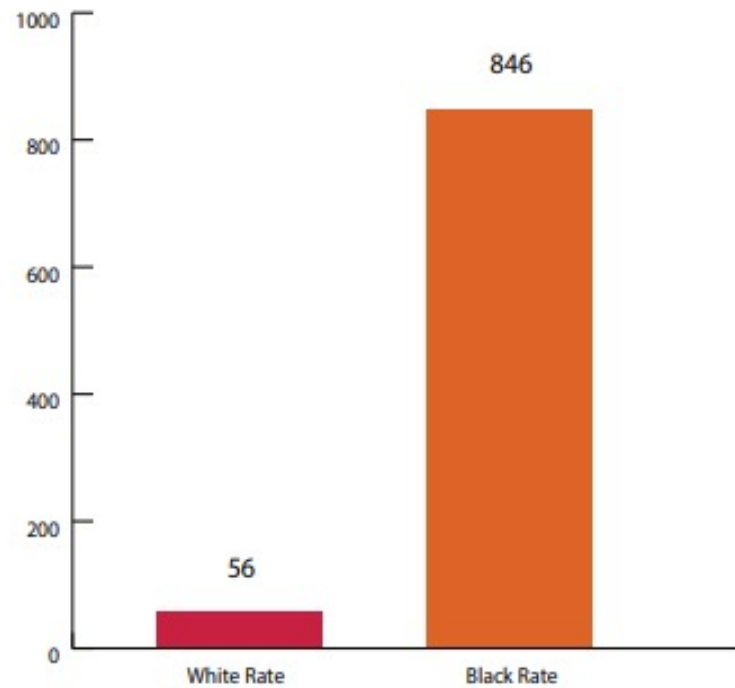


Chart 4:

**Black Youth More Likely To Be  
Placed In Juvenile Correction Facilities  
Than White Youth**

2015 Rates Per 100,000



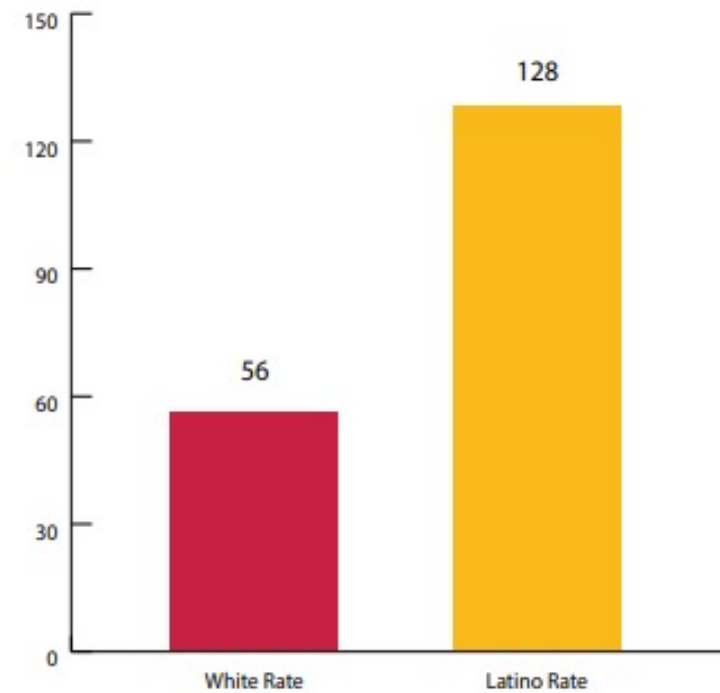
Source: The Sentencing Project

[www.racetoequity.net](http://www.racetoequity.net)

Chart 5:

**Latino Youth More Likely To Be  
Placed In Juvenile Correctional Facilities  
Than White Youth**

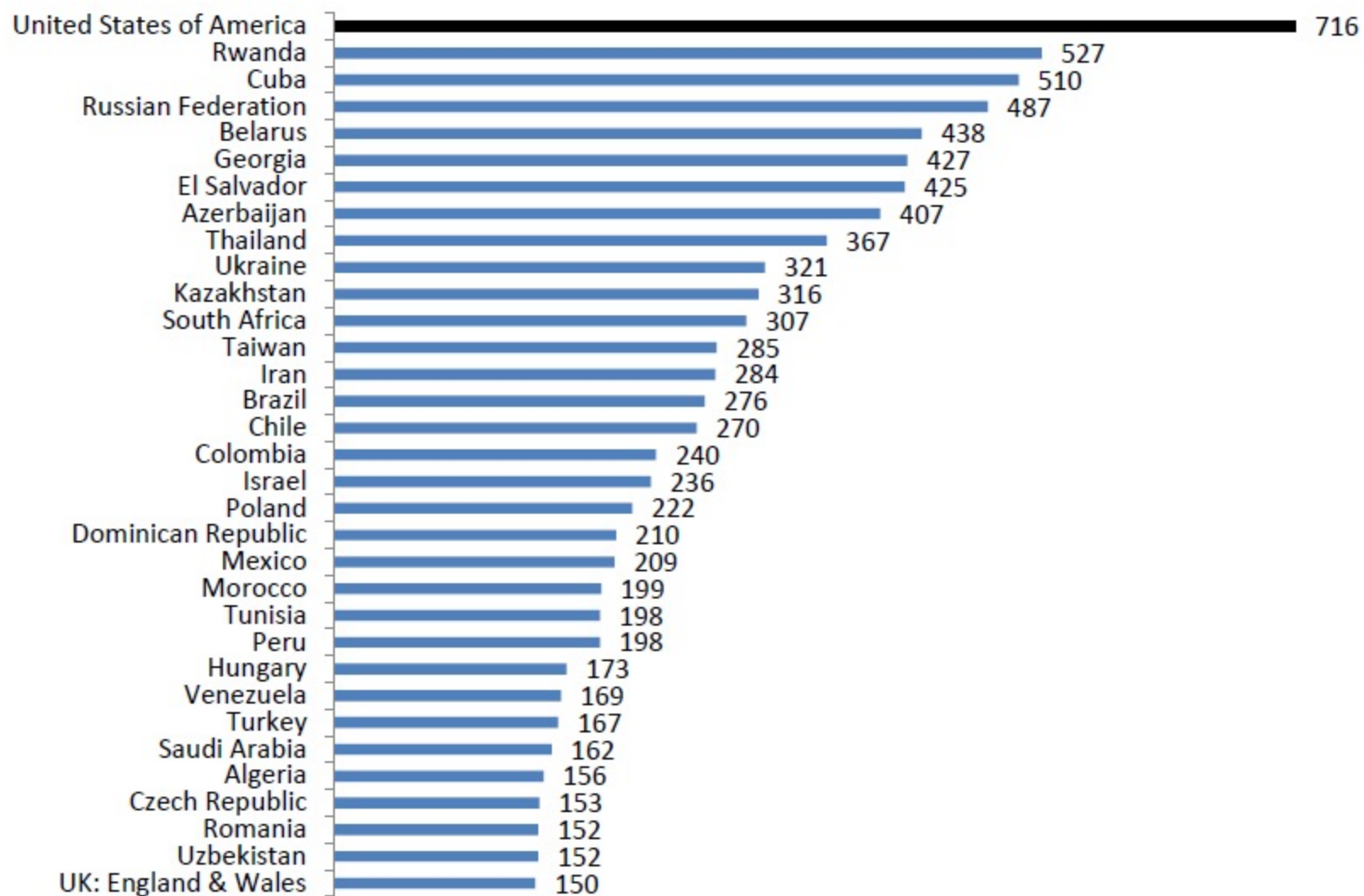
2015 Rates Per 100,000



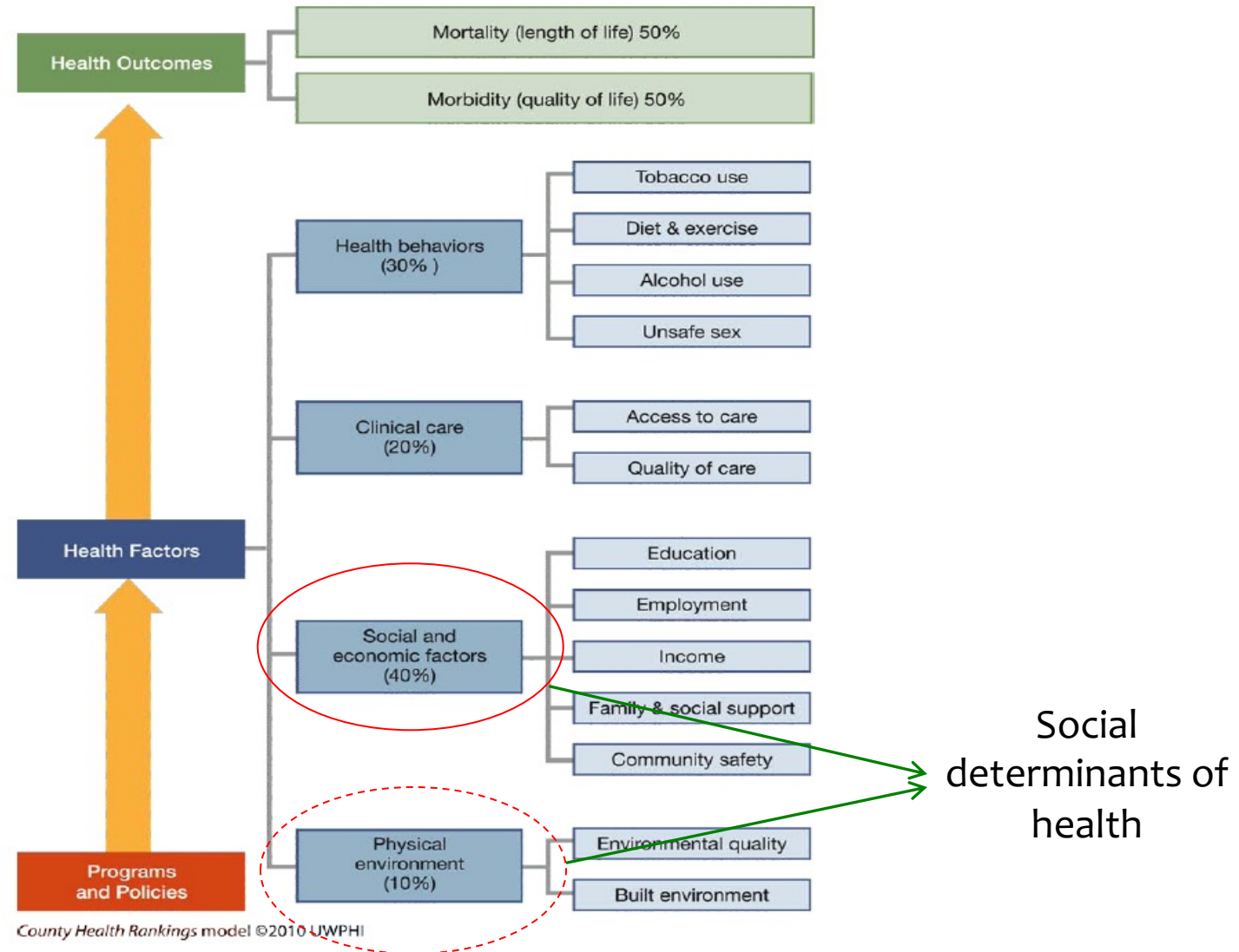
Source: The Sentencing Project

[www.racetoequity.net](http://www.racetoequity.net)

### Incarceration Rates per 100,000 Total Population (i.e., Men, Women and Children)



# What Impacts Health?







**EQUALITY**



**EQUITY**



In the first image, it is assumed that everyone will benefit from the same supports. They are being treated equally.



In the second image, individuals are given different supports to make it possible for them to have equal access to the game. They are being treated equitably.




In the third image, all three can see the game without any supports or accommodations because the cause of the inequity was addressed. The systemic barrier has been removed.



Distinctions between Diversity, Equity and Inclusion

*A focus on equity -- by definition -- will move aspirations around diversity and inclusion as well.*

The background of the slide features a series of thin, curved lines in a light gray color, creating a sense of motion and depth. These lines are more prominent on the left side and fade towards the right.

In the US, we  
are not a  
learning system

- Driven by crisis
- Cyclical
- Very limited use of evidence base
- Service led, not needs based



The background features a series of concentric circles in light gray, some solid and some dashed, creating a ripple effect. A bright green speech bubble is centered on the page, containing the text "Evolution v. Revolution".

# Evolution v. Revolution



## BUILDING YOUR UNSYSTEM: THE PHASES OF CHANGE TO PRIMARY PREVENTION

---

A new way of work is emerging in child welfare, one that focuses on keeping families together. What's missing is HOW to do it. Alia has developed five (overlapping) phases of change to guide your shift toward primary prevention.



UNIVERSITY of **HOUSTON**

GRADUATE COLLEGE of SOCIAL WORK



*Center for the  
Study of  
Social Policy*

# President Biden Announces American Rescue Plan

JANUARY 20, 2021 • LEGISLATION

*Emergency Legislative Package to Fund Vaccinations, Provide Immediate,  
Direct Relief to Families Bearing the Brunt of the COVID-19 Crisis, and Support  
Struggling Communities*



The background features a series of concentric circles in light gray, some solid and some dashed, creating a ripple effect. In the center, there is a large green speech bubble with a small tail pointing downwards. Inside the bubble, the word "Discussion" is written in white.

# Discussion